



JANUARY NEWSLETTER

Wednesday 27th January 2026

Contacts:

Phone: 939 9707

txt: 027 3710 947

KCC Cellphone: 027 241 3028

Teeth: 0800TALKTEETH

PRINCIPAL: Dave Lamont principal@koraunui.school.nz

BOARD OF TRUSTEES: Chris Blazkow BoT.Chair@koraunui.school.nz, amber.pacheco@koraunui.school.nz, michelle.baker@koraunui.school.nz, grace.hiess@koraunui.school.nz, jack.taueki@koraunui.school.nz, Craig.Gilmour@koraunui.school.nz

KIA ORA, TALOFA LAVA, AND WELCOME BACK EVERYONE.

I hope everyone had a good Christmas and New Year break, enjoyed family time together and made the most of the time away from school. We are looking forward to the year ahead and have planned some very exciting learning opportunities for the children and staff this year. We welcome a number of new tamariki and their whanau to our school this year and look forward to them becoming a part of our school community.

We also welcome new staff member Anna Steward who is taking up a full-time teaching position at Koraunui School this year.

We will begin the year with the following class make up.

Kauri Team	Year Group	Teacher
Room 23	Year 1	Whaea Maria
Room 4	Year 1 & 2	Whaea Dale
Te Puawātanga o te Kākanō Team	Year Group	Teacher
Room 7	Year 3, 4 & 5	Whaea Jenny
Room 9	Year 4, 5 & 6	Whaea Liz
Room 10	Year 1, 2 & 3	Whaea Anna
Fetu o le Moana Team	Year Group	Teacher
Room 12	Year 4 & 5	Mrs McLeod
Room 13	Year 4 & 5	Mr G
Room 14	Year 6	Miss Hutchison
Room 15	Year 3	Matua Tim

We start school on Wednesday 4th February at 8:30am, Mihi Whakatau for new staff, students and whanau at 8.45am

MIHI WHAKATAU/WELCOME

We begin our school year with a mihi whakatau at 8.45am on Wednesday 4th February to welcome new staff, students and their whanau to our Kura.

New tamariki and whanau will meet outside the front gate at 8.30am and be brought on as a group. After the mihi whakatau. At this point the children will be collected by their teacher and taken to their class, whanau are welcome to stay for a cuppa and a chat.

STAFFING FOR 2026

We are currently fully staffed for the start of the new school year and look forward to continuing to work together with our school community to provide our tamariki with exciting and rich learning experiences across the school. Classroom teachers will again have 5 days a term release time, all classes will have additional teachers working with tamariki during the year. As much as possible, we will work to have the same release teachers working in the classes so there is as little disruption as possible for tamariki.

CLASS PLACEMENT

Your child's class placement for 2026 was with their report in 2025. If you are unsure what class your child is in for 2026 or did not receive the end of year report, please contact the school office.

TEACHER/STAFF ONLY DAYS

At this stage we have planned for two Ministry of Education teacher-only days during term time for 2026. These will be as follows.

- Term 2 - Friday 29th May – Curriculum and assessment day for teachers (TBC)
- Term 4 - Friday 23rd October – Curriculum and assessment day for teachers (TBC)

STATIONERY

This year we have again been able to allocate some of the Ministry of Education donation scheme funding to school stationery. This will pay for stationery the children require to begin the school year. There will be no cost to parents/whanau for start of year stationery.

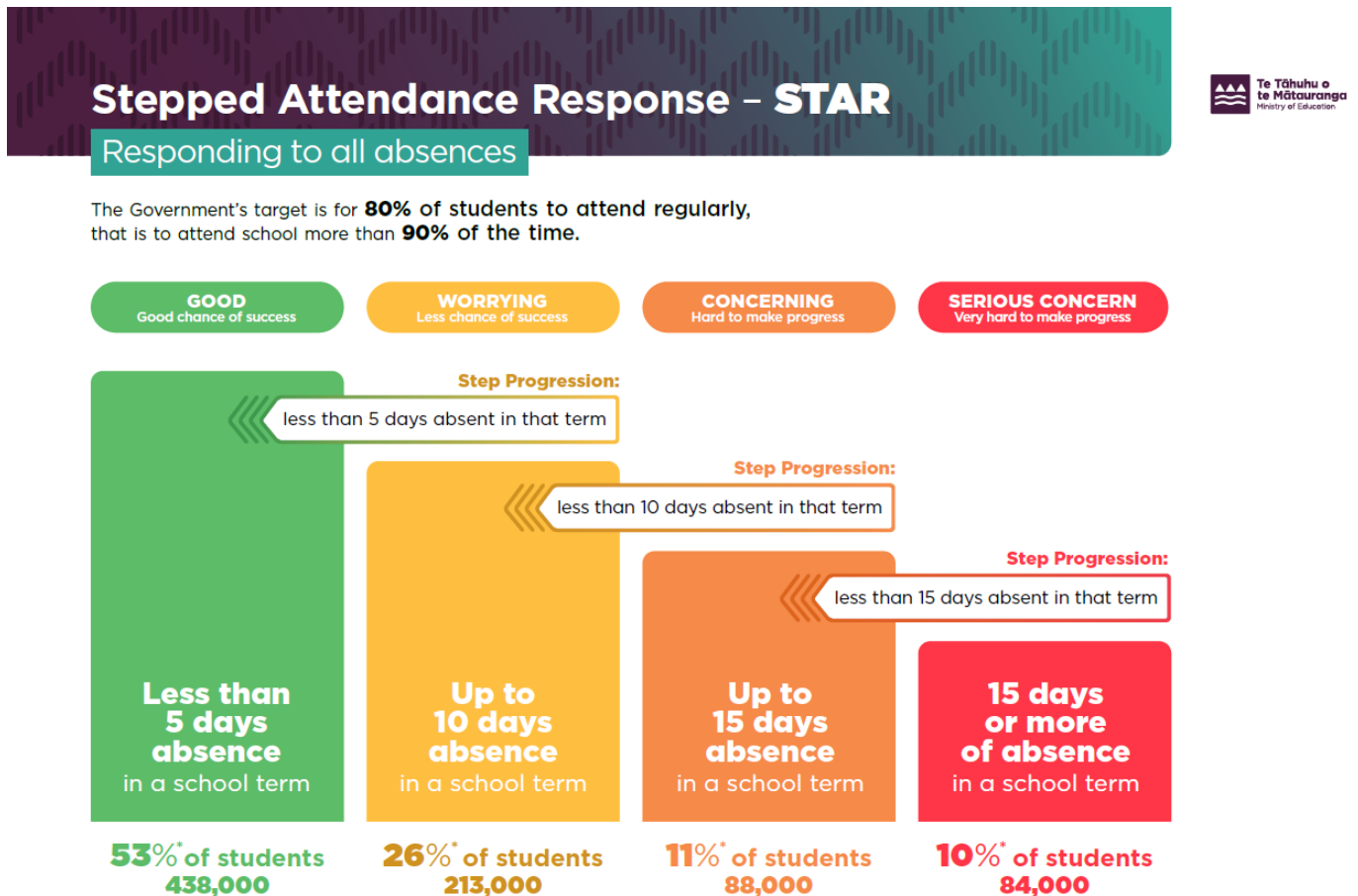


- All we are asking is that parents/caregivers/whānau make a \$5 per child contribution that will be used for classroom tissues and paper resources. By keeping on top of hygiene, we anticipate we will go through a lot of tissues and products this year as we continue working to keep everyone safe.
- We **DO** have eftpos at school! Our preference is to make a direct deposit into our bank account. The school account number is 12-3478-0015483-00. If this is not possible for you, eftpos and cash will be fine.

ATTENDANCE REQUIREMENTS FOR 2026

Every school must record attendance data and provide it to the Ministry of Education daily in 2026.

We will be contacting parents as attendance moves through the categories (it doesn't take long to get to the WORRYING stage) to help support whānau to achieve the attendance target.



The Government's target is for 80% of students to attend school regularly, that is to attend school more than 90% of the time. The graphic below shows the attendance categories.

MANA POTENTIAL

Mana Potential is a framework that is strength-based that helps to build and strengthen positive relationships and culture within our school community. The framework creates a shared language that supports learning and enhances well-being by growing, strengthening and sustaining great relationships. It focuses on what can be done, not what can't.

This approach fits within how we already work with tamariki and each other and incorporates our KORAU values and other work we have done around building positive relationships and responding to behaviours safely.

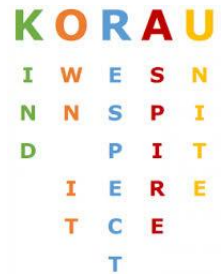
To build positive relationships and understanding, we all need to share a bit about ourselves and about where we come from.



KORAU VALUES

We will be focusing on our KORAU Values again this year and how these can be demonstrated through words and actions around the school. These are the basis on how we build relationships and work together. Our KORAU values are

- | | |
|-----------------------------|---|
| Kind/Manaakitanga | We show Kindness to people and the environment. |
| Own/Rangatiratanga | We Own our own behaviour. |
| Respect/Whakaute | We Respect the rules, people, and the school. |
| Aspire/Wawata | We do quality work and strive for excellence. |
| Unite/Whanaungatanga | We work as a team / whanau. We are inclusive. |



SWIMMING LESSONS – STOKES VALLEY POOL

Swimming lessons at Stokes Valley Pool begin from Monday 16th February. The children walk to the pool so will need comfortable walking shoes and will go wet or fine. Please make sure the children come to school with named togs and towels the weeks their class is due to go to the pool. Lessons will be between Monday and Thursday. Please feel free to walk with your child's class to and from the pool if you wish. Swimming times will be published in the next 2 weeks.



SCHOOL POOL

Our school pool will be open for classes to use every day this term. This will supplement the swimming lessons the children receive at Stokes Valley Pool. Classroom teachers will let you know the days they are using the school pool.

SICK CHILDREN

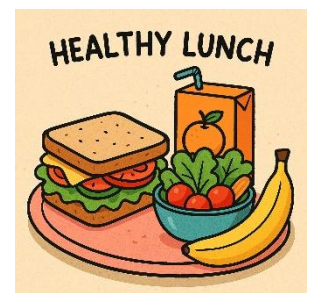
If you are keeping children home, PLEASE CONTACT THE OFFICE. If children are feeling unwell, they need to remain at home and parents contact school.

If children display any signs of illness at school, we will contact parents/caregivers to come and pick them up along with their siblings.

All children are expected to attend school unless they are unwell.

FREE SCHOOL LUNCHES

We will be taking part in the Ministry of Education Free Lunches in School Programme again this year. Each child will be provided lunch every day of the school year. With the changes the Government has made to how lunches are funded, only the main meal will be provided this year. Snacks will need to be provided by parents. All children, whether they are having a school lunch or bringing their own will again be eating lunch in the hall as the lunches will be served on a plate. The lunches will be provided from our first day back on Wednesday 4th February.



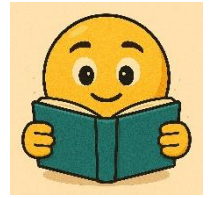
CAN YOU HELP?

The mornings before school starts are really busy for staff. We have a **Kids Kitchen**, breakfast will be available to children from 8.00-8.30am each day. Help is needed to run this.

We also need people on the **school crossing** to see children over the busy roads safely each morning between 8.00-8.30am.

COMMUNITY TUTOR READING

We are in need of some people to help take Community Tutor Reading again this year. If you can spare an hour and a quarter a week to listen to children read, you will read with five individuals for 15 minutes each, please leave a message for Denise Silk-Martelli and she will get back to you.



Please fill in the form on page 6 of the newsletter if you are prepared to be rostered on to a regular session each week (or team up with another family and take turns).

KCC BEFORE AND AFTER SCHOOL CARE

We will be operating KCC before and after school care programmes again this year. If you are interested in using this service on a permanent or casual basis, please contact the school office.

2PM CLUB

All children will need to be booked into 2PM Club by [clicking here](#) Even if they attended last year. Every Wednesday and Friday we run 2pm Club between 2.00-3.00pm for children whose parents book them in for this service. The cost of 2pm Club is \$2.00/session. This is to cover the cost of supervision during these times.



SCHOOL DONATIONS

This year the Board of Trustees has again opted into the Government Donation Scheme. This has been done in an effort to minimize the cost to parents/caregivers/whanau for their children attending school. We will not be asking for parents to contribute financially for school trips that are part of the curriculum programme. There will be occasions where a cost will be required to be paid by parents/whanau (i.e. summer and winter sports teams that are outside the core school curriculum).

COMMUNICATION

For any questions, worries or concerns parents have about their children's behaviours, learning, social interactions or engagement in school, these need to be directed to the classroom teacher in the first instance. Our teachers are all very approachable and are happy to discuss children with their parents/caregivers/whanau. We have a very clear process that can be viewed on our school website at

<https://koraunui.school.nz/assets/Uploads/BoT/Policies-and-Procedures/Concerns-and-complaints-process-flowchart-v2.png>. This is also available to view in the school office.

HATS



Please make sure your child has a sunhat to keep at school, clearly named, on the hat, so any lost property or ownership disputes can be quickly resolved. Be aware that we will name hats with a marker pen if there is no name evident, so please, no expensive designer hats!



PERSONAL PROPERTY

One of our expectations of all children is that they look after their own belongings. Please help your children learn how to be responsible by checking they are bringing their clothing and lunch boxes etc home every day.

Named clothing really helps.

Regularly checking the abandoned clothing around the school is a good plan to reunite clothing with owners.

ENROLMENTS

Do you have or know of any children who are starting school this year? New student enrolment forms are available at the office or on our website under “About us”. If you require further information, please contact the office on 939 9707 or message us on our school website or Facebook page.

BANK ACCOUNTS

Many families keep a small bank account with the school office to pay for school costs during the year. If you would like to do this, talk to Melva, Maree or Janice and they will show you how it works.

Some families have set up a regular bank credit to do the same thing. If you wish to do this, the lovely office ladies will help with this.

Keep up to date with photos and information of what is happening around the school and in the classrooms on our Facebook page.



CONTACT DETAILS

If your contact details have changed in the last year please complete the contact details at the bottom of the return form. It is really important that we have accurate and up-to-date contacts for safety and emergencies.

Kia pai te ra kia koutou – have a great week everyone.

Dave Lamont
Principal

WHATS COMING UP THIS TERM?

Week One

- Monday 2nd February: TEACHER ONLY DAY
- Tuesday 3rd February: STAFF ONLY DAY
- Wednesday 4th February: SCHOOL STARTS FOR THE YEAR at 8:30am.
- Friday 6th February: Waitangi Day. **SCHOOL CLOSED**

Week Two

- Sunday 15th February: Round the Bays

Week Three

- Monday 16-19th February: Stokes Valley Swimming lessons begin
- Friday 20th February: BLAKE Foundation VR - Year 6 tamariki

Week Four

- Monday 23-26th February: Stokes Valley Pool Swimming lessons continue
- Wednesday 25th February: Board of Trustees Meeting

RETURN FORMS

Please let the office know if you can help or if there are any changes we need to know about, even if you have filled in only one section.

YES, I CAN HELP!

School crossing: 8.00-8.30: Possible days: Mon Tue Wed Thu Fri

Name: _____ Phone: _____

YES, I CAN HELP!

KIDS KITCHEN BREAKFAST:

8.00-8.30: Possible days: Mon Tue Wed Thu Fri

Name _____ Phone: _____

YES, I CAN HELP!

Community Tutor Reading:

Name: _____ Phone: _____

CONTACT DETAILS

Childs/Children's Name:

Parent/Caregiver Name:

Address:

Phone:

Mobile:

Email:

Emergency Contact and Relationship:

Address:

Phone:

Mobile:

Email: