



Poipoia te kākano kia puawai – *Nurture the seed and it will thrive*

NEWSLETTER TEN, TERM ONE

Wednesday, 6th APRIL 2022

Contacts:

Phone: 939 9707 **txt:** 027 3710 947 **KCC Cellphone:** 027 241 3028 **Teeth:** 0800TALKTEETH

PRINCIPAL: Dave Lamont principal@koraunui.school.nz

BOARD OF TRUSTEES: Spencer Heiss BoT.Chair@koraunui.school.nz, chris.millar@koraunui.school.nz,
Gillian.McPeake@koraunui.school.nz, amber.pacheco@koraunui.school.nz

KIA ORA, TALOFA LAVA, AND WELCOME.

Welcome to Freya who joined our school this week.

TEACHER ONLY DAY LAST WEEK

We would like to thank everyone for supporting us with the teacher only day we had last week. This was a great chance for us to reflect on this term and begin preparing for next term.

We have one more Teacher Only Day to use before the end of Term 2. Currently the plan for this day is to hold a combined staff only day for the schools of the Tāita/Stokes Valley Kahui ako on Friday 3rd June. This will be confirmed early in Term 2.

COVID Red Light Processes – COVID Cases



After the announcement on Monday that New Zealand will remain at red level until next Thursday, this gave us some certainty about the processes we will follow until the end of the term. While we have seen a reduction in the number of positive COVID cases over the past week, we will continue with the same processes we have had in place until the end of next week, the end of Term 1.

- To date we have had 47 people who have tested positive for COVID-19 who haven't already been in isolation at home.
- 39 of these people have now returned to school after completing their isolation time.
- We have had 24 children also test positive while they have been home isolating as household contacts.

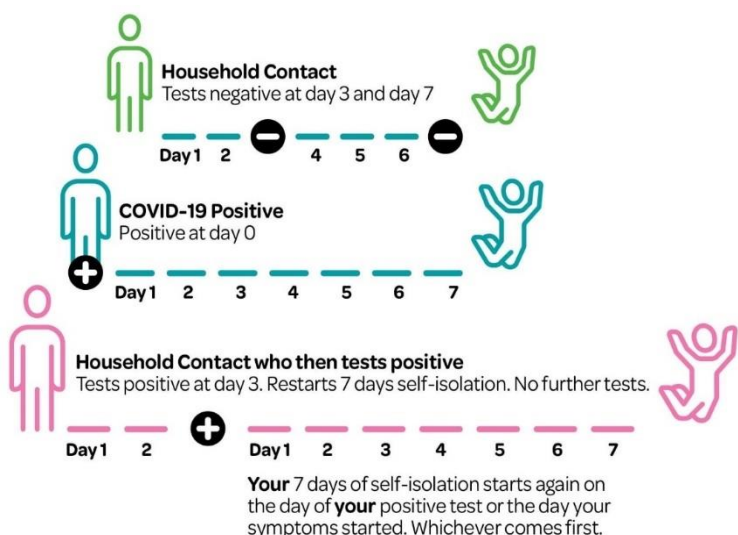
It is great to see those who have been isolating coming back to school each day. It would be great to see as many children back as school as possible before the end of term.

If anyone needs RATs, please contact the school office as we have been provided a good supply by Te Awakairangi Health that we can distribute to school whanau who need to carry out COVID tests.

PLEASE DO NOT BUY TESTS AS WE CAN NOW ACCESS THESE FOR FREE.

Information about isolation periods and testing for positive COVID-19 cases and household contacts is below with more detail available on our school website [HERE](#).

The image below shows key dates for people isolating.



Need Support while Isolating?
Call 0800 747 213
Select from the following options:
1 RATs - how to access & use your test
2 COVID-19 Welfare Support
3 Mental Health & Wellbeing Support
Mon-Fri
8.30am-6pm
www.pacifichealthhutt.co.nz
PACIFIC HEALTH SERVICE
HUTT VALLEY

SCHOOL DEVICES



If your children have been using a school iPad or Chromebook while at home in isolation, please bring this to the office when your children return to school. Thank you 😊



KCC HOLIDAY PROGRAMME

Information about the holiday programme for the April holidays is available on our school website and towards the end of this newsletter. Please contact the office for an Expression of Interest form. **If you would like your child to attend the holiday programme, please contact the office this week.** If you have any questions, please contact the school office.

LUCKY BOOK CLUB – only online orders are being taken. No cash will be accepted at school. **All orders for Term 1 need to be in by Monday 11 April.**



FOOTBALL DONATION



We would like to say a huge thank you to the Stokes Valley Football club for the very generous donation of 2 bags of Nike footballs. I'm sure these will get well used as we head into the winter months.





WHAT'S HAPPENING AROUND THE SCHOOL

FANCY FEET DAY 2022

FANTASTIC FANCY FEET FUN DAY 🥳🥳. What a fabulous turnout we had last Thursday to celebrate the end of Movin' March. It was wonderful to see so many creative ideas from our tamariki and staff! We were super fortunate to have the sun shining down on us and to be able to come together, safely, as a kura. Thanks to everyone for supporting the kaupapa and for aspiring to reduce our carbon footprint as a kura.

Thanks also to Whaea Liz for being so passionate about promoting how we can all contribute to taking better care of our environment and planet.



ROOM 14 EXPLORATIONS

As a part of their maths this term, Room 14 we have begun learning about measurement and volume by exploring and comparing the volume of boxes. Whaea Ceri has been amazed to hear the mathematical talk!

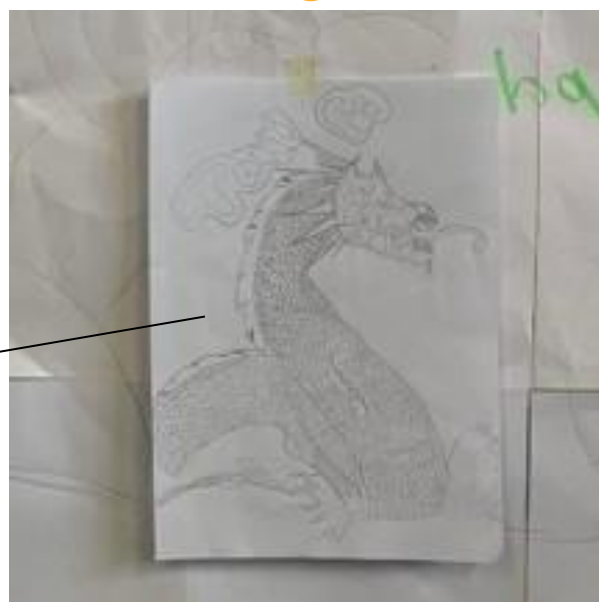
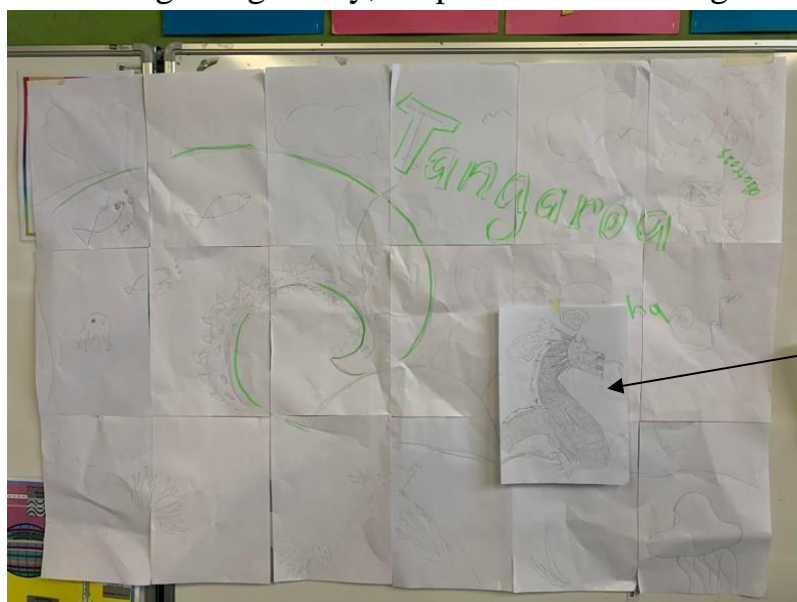
One afternoon, they took full advantage of the beautiful weather and went outside to observe the change of seasons in nature by doing some nature studies with oil pastels.



TANGAROA MURAL – Design update from Whaea Ceri

The mural team planned out their final rough design on Tuesday - they're now going to add in some components (like Sione's incredible taniwha that he researched and drew) by Friday and then the next job is to get stuck into it and add the detail.

It's coming along nicely, despite all the challenges we have had this term 😊



BANK ACCOUNTS

Many families keep a small bank account with the school office to pay for stationery and sports fees. If you would like to do this, bring in some cash and talk to Melva or Maree and they will show you how it works.

Some families have set up a regular bank credit to do the same thing. If you wish to do this, the lovely office ladies will help with this. Our account is Koraunui School Board of Trustees
12 3478-0015483-00

CONTACT DETAILS

It is important that we have accurate and up-to-date contacts for safety and emergencies. If any details have changed for you, please contact the office and let them know.

WHATS COMING UP THIS TERM?

Week Eleven onwards:

- Thursday 14 April: End of Term 1

Term 2

- Monday 2 May: Term Two starts
- Monday 9 May: Build and Play equipment in school this week
- Monday 16 May: Primary Science Week begins – Antarctica
- Wednesday 18 May: Board of Trustees Meeting
- Monday 23 May: Build and Play equipment in school this week
- Friday 27 May: School Photos
- Monday 30 May: Build and Play equipment in school this week
- Friday 3 June: Kahui ako (Tāita/Stokes Valley) staff only day – **SCHOOL CLOSED** the
- Monday 6 June: **QUEENS BIRTHDAY – SCHOOL CLOSED**
- Friday 24 June: **MATARIKI – Public holiday SCHOOL CLOSED**
- Friday 8 July: End of Term 2

Term 3

- Monday 25 July: Term 3 starts

Dave Lamont

Principal

Go the Crusaders this weekend 😊

KCC HOLIDAY PROGRAMME

Once your booking is confirmed you are liable for the charges, whether your child attends the programme or not, unless notification of cancellation is received by Wednesday 13 April 2022.

<p>Monday 18 April</p> <p>Closed</p> <p>Easter Monday</p>	<p>Tuesday 19 April</p> <p>Decorate a Mug</p> 	<p>Wednesday 20 April</p> <p>Decorate a key tag</p> 	<p>Thursday 21 April</p> <p>Rainbow yarn craft</p> 	<p>Friday 22 April</p> <p>Science experiments</p> 
<p>Monday 25 April</p> <p>Closed ANZAC Day</p> 	<p>Tuesday 26 April</p> <p>Boomerang decoration</p> 	<p>Wednesday 27 April</p> <p>String art</p> 	<p>Thursday 28 April</p> <p>Art activities with local artist</p> 	<p>Friday 29 April</p> <p>Party and games day</p> 

Please note: As well as the listed activities there will be various arts and crafts and games offered each day, as well as cooking activities on some days.

EXPRESSION OF INTEREST ON THE NEXT PAGE

Koraunui Kids Care Holiday Programme - Expression of Interest

Please note this is an indication only, an enrolment form will be sent on receipt of this form.

Childs Name(s): _____

Parent Name: _____ Contact Number: _____

April	7am-8am	8am-12pm	12-5pm	5-5:45pm	9-3pm	Total to pay
Tuesday 19	\$5.00	\$20.00	\$25.00	\$3.75	\$30.00	
Wednesday 20	\$5.00	\$20.00	\$25.00	\$3.75	\$30.00	
Thursday 21	\$5.00	\$20.00	\$25.00	\$3.75	\$30.00	
Friday 22	\$5.00	\$20.00	\$25.00	\$3.75	\$30.00	
Total						

April	7am-8am	8am-12pm	12-5pm	5-5:45pm	9-3pm	Total to pay
Monday 25*	\$5.00	\$20.00	\$25.00	\$3.75	\$30.00	
Tuesday 26	\$5.00	\$20.00	\$25.00	\$3.75	\$30.00	
Wednesday 27	\$5.00	\$20.00	\$25.00	\$3.75	\$30.00	
Thursday 28	\$5.00	\$20.00	\$25.00	\$3.75	\$30.00	
Friday 29	\$5.00	\$20.00	\$25.00	\$3.75	\$30.00	
Total						

***Please note as per our policies, fees will apply for any public holidays that fall on any of your child's regular days of care.**

Please fill in spaces for sessions you would like your child to attend and return this booking form to the school office by Monday 4 April.

ST PHILIP'S REVIVE



Mini Easter Festival
SUNDAY 10 APRIL
4PM - 6PM

JOIN US FOR AN EASTER FESTIVAL
ON THE LAWN!

4 RAWHITI STREET, STOKES VALLEY

EASTER EGG HUNT, CRAFTS, A BBQ
& MAKE YOUR OWN ICECREAM SUNDAES
ALL FREE!



Register at www.stphilipsrevive.nz

15th - 18th of April


Ngā Manu
NATURE RESERVE

Easter Celebration



OPEN DAILY 10am - 5pm

Easter Rock Hunt, Easter activities
in our Easter Zone & daily prizes!

www.ngamanu.org.nz

 View our Event on Facebook

PH 04 2934131

74 Ngā Manu Reserve Rd, Waikanae

