



Nurture the seed and it will thrive - Poipoia te kākano kia puawai

NEWSLETTER FIVE, TERM THREE

Tuesday, 25th August 2020

Contacts:

Phone: 939 9707 **txt:** 027 3710 947 **fax:** 939 9708 **Teeth:** 0800TALKTEETH **KCC Cellphone:** 027 241 3028

PRINCIPAL: Dave Lamont principal@koraunui.school.nz

BOARD OF TRUSTEES: Craig Press BoT.Chair@koraunui.school.nz, chris.miller@koraunui.school.nz,
Gillian.McPeake@koraunui.school.nz, janie.tito@koraunui.school.nz, shane.doherty@koraunui.school.nz,
spencer.hiess@koraunui.school.nz

KIA ORA, TALOFA LAVA, AND WELCOME.

Welcome to the new children and their whanau who have recently joined our school this week: Ariya and Arahia.

COVID-19 Alert Level 2

Thank you to everyone who has been supporting us by following the Alert Level 2 guidelines. These guidelines will be in place until we are advised these are no longer required.

In the last week we have seen children jumping fences to get into school, parents jumping fences to get into school and parents lifting children over fences to get into school – rather than coming to the front gate like everyone else. **Please stop these inconsiderate and selfish behaviours.**

We have put the alert level 2 processes in place to keep everyone at school safe not to inconvenience anyone.

Below are the guidelines we ask parents/caregivers and whanau to follow.

Start of Day Drop off

All children are to come in through the front gate in the morning. *All other gates will be locked during the day.* **We are asking all parents/caregivers and whanau to remain outside the school gates.**

- **Any adult or family member who NEEDS to come on site must register** using either the COVID-19 Tracer App and QR code provided or the paper register. The COVID-19 register can be downloaded at Apple App store or Google Play. This is for contact tracing purposes. All information will be held at the school.
- Any children arriving at school between 8.30-9.00am will need to go straight to their classroom. Any children arriving after 9.00am will need to check in at the office.



End of Day Pick-up

We are asking all parents/caregivers and whanau to remain outside the school gates. Your children will be delivered to you 😊

- At the end of the day we will have three pick-up points to avoid congestion and to help us manage distancing at school. Pick up for family groupings - the oldest child to collect siblings and then go to the youngest child's collection point.
- Main School Gate: Kowhai Block – Rooms 8, 9, 10 & 11
- Montgomery Street “Matt’s Gate” – Rooms 12, 13, 14 & 15
- Hall Entrance Gate – Rooms 1, 23, 4 & 5

A teacher will be on the gate – 10 minutes before school finishes to help manage children leaving the school grounds.

ALL OTHER GATES AROUND SCHOOL WILL BE LOCKED AT ALL TIMES.

SICK CHILDREN

If you are keeping children home, PLEASE CONTACT THE OFFICE. We are continuing to ask that even if children are feeling slightly unwell, they need to remain at home and parents contact school. **We ask that parents take their children to see the doctor if they are showing any symptoms linked to COVID-19 such as a fever, cough, sore throat, loss of taste or smell.**

If children display any signs of illness at school, we will put a face mask on them, put them in the medical room and contact parents/caregivers to come and pick them up.

All children are expected to attend school unless they are unwell.

Classroom Hygiene

- classrooms have been arranged to cater for “Moist Breath Zone” distancing. We will do all we can to provide spaces and environments where children have appropriate space in classrooms and in the school grounds.
- all classrooms have been supplied with disinfectant, bars of soap, liquid soap, hand sanitizer and towels.
- we follow the Ministry of Education and Ministry of Health guidelines around distancing, using the “Moist Breath Zone” rule for distancing. A video has been produced for children coming back to school.
<https://www.youtube.com/watch?v=yZvtoVrykb8&feature=youtu.be> Please show this to your children and talk with them about keeping distance to help everyone stay well.

Morning Tea & Lunch breaks – children will eat at their desks/tables inside their classrooms – 10 minutes morning tea, 15 minutes at lunch time.

Drinking Fountains – these will remain closed while we are in Alert Level 2. Children are to bring named water bottles to school.

THERE IS TO BE NO SHARING OF FOOD OR DRINKS AT SCHOOL.

KORAU Values – As we head into the second half of the term, we often see everyone becoming increasingly tired and tolerance levels become lower. This is a good time to reflect on how our value of **Kindness/Manaakitanga** can be demonstrated through words and actions. It is up to adults to model this to our tamariki.



Board of Trustees Policy Documentation -



Koraunui School



This site contains

Koraunui School's
Policies and Procedures
along with useful checklists and forms.

Our Board of Trustees has begun using Schooldocs for all our school policy documentation. All our policies can be accessed through the Schooldocs button on the home page of our school website. Each term we will carry out planned reviews of policies and will be asking for input from our community and staff for certain policies.

This term we are asking for parent input about the **Learning Support Policy**. Instructions are below for how to access the review section of the Schooldocs site.

Instructions for parents to access policy review.

1. Visit the website <https://koraunui.schooldocs.co.nz/1893.htm>
2. Enter the username (koraunui) and password (koraunui).
3. Follow the link to the relevant policy as listed.
4. Read the policy.
5. Click the Policy Review button at the top right-hand corner of the page.
6. Select the reviewer type "Parent".
7. Enter your name (optional).
8. Submit your ratings and comments.
9. If you don't have internet access, school office staff can provide you with printed copies of the policy and a review form.



HEAD LICE



We have been informed by some parents that their children have headlice. We ask that you please check your children's hair, especially if you notice them scratching. Information about preventing the spread of headlice can be found at the following website <https://www.kidshealth.org.nz/head-lice>. We have some treatment products available at school. Please contact the school office for advice and support.

CHILDREN'S CLOTHING

We have a lot of lost property gathering around the school again, mostly un-named. Please make sure all clothing is named and check your children are bringing their clothing home with them each day. Please check the lost property for any of your children's clothing.

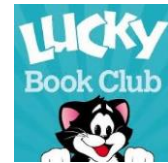


50 Cent Stalls – No 50 cent stalls this week. We will reassess this after the government decision is made about levels on 6 September 2020.

ENROLMENTS

Do you have or know of any 5-year old children who are starting school this year or next? New student enrolment forms are available at the office or on our website under "About us". If you require further information, please contact the office on 939 9707 or message us on our school website or Facebook page.

LUCKY BOOK CLUB – only online orders are being taken. No cash will be accepted at school. **All orders for Term 3 need to be in by Friday 11 September.**



WHATS COMING UP THIS TERM?

Term 3

Week 6

- Monday 24 & Tuesday 25 August: Multi Sports Festival for selected students

Week 8

- Monday 7- Friday 11 September: Takaro programme in school
- Wednesday 9 September: Board of Trustees Meeting
- Sunday 20 September: Year 6 Swimathon at SV Pool 4.30-6.00pm

Week 10

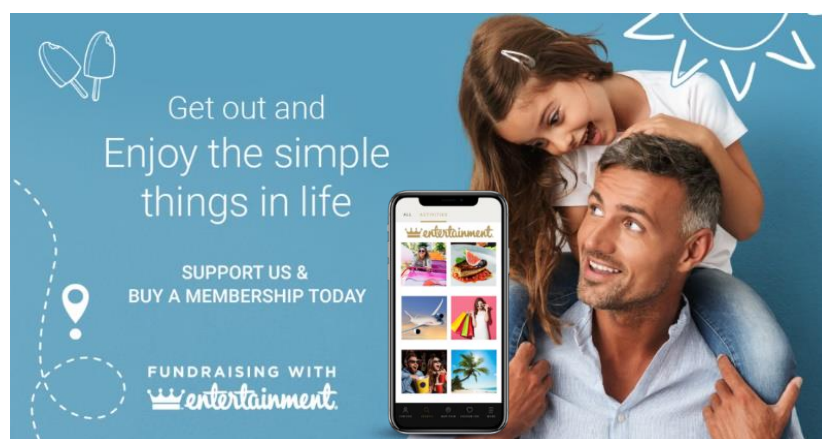
- Monday 21 & Tuesday 22 September: Multi sports Festival for selected students
- Tuesday 22 September: Rimurimu citizen science field trip all day 1213
- Thursday 24 September: Rimurimu citizen science field trip all day 1213
- Friday 25 September: End of Term 3

Ngā mihi nui

Dave Lamont, Principal

ENJOY THE SIMPLE THINGS WHILST SUPPORTING OUR SCHOOL!

Koraunui School are selling Entertainment Digital Memberships as part of this year's fundraising initiative and we would love your support. Get out and enjoy what your local community has to offer!



Entertainment Digital Memberships are convenient, easy to use and packed full of valuable 2 for 1 and up to 50% off offers for you to use over 12 months from activation. Enjoy offers from your local hospitality favourites and much, much more!

Buy online to **support us** today by clicking the below link

<https://www.entertainmentbook.co.nz/orderbooks/1050q02>

Thank you for your support!