



Poipoia te kākano kia puawai – *Nurture the seed and it will thrive*

NEWSLETTER SEVEN, TERM ONE

Wednesday, 16th March 2022

Contacts:

Phone: 939 9707 **txt:** 027 3710 947 **KCC Cellphone:** 027 241 3028 **Teeth:** 0800TALKTEETH

PRINCIPAL: Dave Lamont principal@koraunui.school.nz

BOARD OF TRUSTEES: Spencer Heiss BoT.Chair@koraunui.school.nz, chris.millar@koraunui.school.nz,
Gillian.McPeake@koraunui.school.nz, amber.pacheco@koraunui.school.nz

KIA ORA, TALOFA LAVA, AND WELCOME.

Welcome to Lucas and his whanau who joined our school this week.

STAFF ONLY DAY – SCHOOL CLOSED

School will be closed on Friday 1 April as we will be holding a staff development day. All staff from the school will be taking part in this day. Some will be onsite, and others will be joining in the day off site as we will continue to maintain our separate areas across the school should these still be in place on this day.

KCC will also be closed for the day.

COVID Red Light Processes – COVID Cases



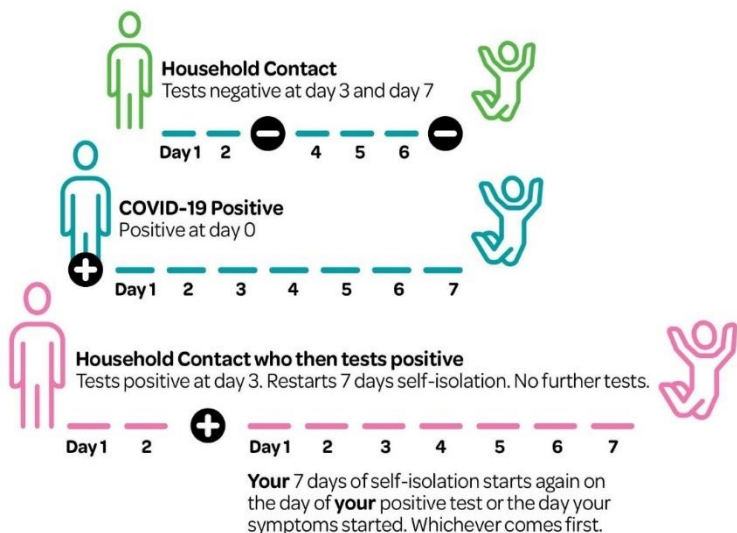
We have continued to see a slow but steady increase in the number of people from our school and school community either test positive for COVID-19 or isolating as close household contacts. To date we have 13 people who have tested positive for COVID-19, who had been at school prior to their positive test. We have had a number of children also testing positive while they have been home isolating as household contacts. To date we feel our response has done a great job at keeping everyone on the school site safe from contracting COVID-19. We will continue with these processes for the time being and will notify our community before we make any changes. We would like to thank everyone for the support we have received and also for whanau isolating at home. This week it has been great to see some of the tamariki who were isolating at home returning to school after their isolation period has finished.

We would like to remind everyone that all information we receive about COVID cases is kept confidential and people's privacy will be maintained at all times. Any correspondence to

parents and whanau from the school about positive COVID cases will be anonymous and only list the classroom the people who test positive are in.

Please be aware that last Friday the requirements for isolation changed with those in isolation now only needing to isolate for 7 days.

If you haven't done so already, please read the information that was emailed out and put on Facebook on Friday. This provides information to you about isolation periods and testing for positive COVID-19 cases and household contacts. It can also be accessed by clicking [HERE](#). The image below shows key dates for people isolating.



Need Support while Isolating?
Call 0800 747 213
Select from the following options:
1 RATs - how to access & use your test
2 COVID-19 Welfare Support
3 Mental Health & Wellbeing Support
Mon-Fri
8.30am-6pm
www.pacifichealthhutt.co.nz
PACIFIC HEALTH SERVICE
HUTT VALLEY

VACCINATIONS – FROM OUR HEALTH NURSE



Covid-19 is not the only vaccine! Covid-19 is understandably grabbing all the attention in our communities, schools and homes, but as winter approaches it is good to remember that other diseases also have a big impact on our community's health.

With flu season approaching it is a reminder that other vaccines are helpful at keeping our very young and elderly out of hospital and from contracting vaccine preventable diseases such as chicken pox, measles, and whooping cough. Please contact your GP or health care provider for a booking. Autumn and winter is also a time for sore throats, and in some communities' sore throats and skin infections can cause rheumatic fever, which can lead to rheumatic heart disease. Don't ignore that sore throat - if you or your tamariki are under 18 years of age, see your GP or local Pharmacy. Sore throats need to be checked out!

For more information see your Public Health Nurse - contact via your local school.

HEAD LICE



We have been informed by some parents that their children have headlice. We ask that you please check your children's hair, especially if you notice them scratching. Information about preventing the spread of headlice can be found at the following website <https://www.kidshealth.org.nz/head-lice>. We have some treatment products available at school. Please contact the school office for advice and support.

MEET THE TEACHER (via VIDEO CHAT)

Due to the COVID red light settings we have not been able to hold our Meet the Teacher sessions as we would have liked. We will be offering a video option for parents this year. Links for video sessions will be posted on our Facebook page as well as emailed to parents.



Te Puāwaitanga o te Kākano (Rooms 7, 8 & 9) A pānui was sent out to whanau. This session will be held today Wednesday 16th March at 6.00pm.

KCC HOLIDAY PROGRAMME

Information about the holiday programme for the April holidays is available on our school website and towards the end of this newsletter. Please contact the office for an Expression of Interest form. **All bookings need to be into the office by Monday 4 April so we can confirm programmes and staffing.**

LUCKY BOOK CLUB – only online orders are being taken. No cash will be accepted at school. **All orders for Term 1 need to be in by Monday 11 April.**



STUDY CENTRE



Enrolment forms for Study Centre have been provided to children in the senior classes across the school (Rooms 7, 13, 14 & 15). Please complete this and return to school with your child if you wish for them to attend Study Centre. We are collecting forms and once the Red-Light Phase 3 settings change we will look to begin Study Centre.

MOVIN' MARCH – LET'S GET MOVIN'!



Red Pou on Kennedy Grove: Parents of tamariki in Fetu o le Moana can



Māhe Manawa Ora
Movin' March
1-31 March 2022 | movinmarch.com



drop their tamaiti near the pou and then your child can walk the rest of the way to kura and you can also meet them near there after school as well. If tamariki do that then they too can get a stamp on their passport. You could even drop your child off on the corner of SV Road and Kennedy Grove.

Remember to keep walking, biking and scooting to and from kura everyday for the month of March – every passport will be put in the draw for the competition being run by Greater Wellington Council. “Record your walk or wheel trips over March and be in to win on of 12 x \$400 **MYRIDE**launch vouchers! This popular

challenge invites tamariki to collect stamps on a passport every time they walk or wheel to/from school during Movin'March.”

HATS & WATER BOTTLES



It is fantastic to see so many children with hats on. Please make sure your child has a **sunhat to keep at school, clearly named** on the hat so any ownership disputes can be quickly resolved.



We encourage children to bring **named water bottles** with them to help keep them hydrated during the day.



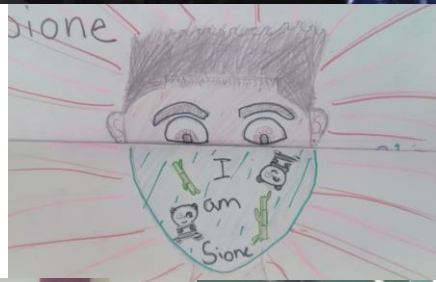
WHAT'S HAPPENING AROUND THE SCHOOL THIS WEEK

TE RUMA TEKAU MA TORU

In Te Ruma Tekau Ma Toru we have been creating our self-portraits. This year we decided to have a bit of twist and add masks to these. When you open them up, you get to see a little bit about us.

We have also been doing some mahi around our quality world, this is what we love and care about.

Mr G.



ZOGGS GOGGLES

Koraunui School would like to thank Zoggs swim wear for the goggles they kindly donated to our kids. Our kids have loved using them and look forward to swimming in the school pool with them. Ka rawe.

Enjoy some writing from Te Ruma Tekau Ma Toru. We may have some marketing whizzes on our hands 😊

As I dove into the sparkling blue water, I put on my Zogg goggles to see...

So much huge coral reefs! I saw it booming with life with animals like salmon, sea anenome, clownfish, seaweed, clams, oysters, and mussels, carps, and stargazer/monk fish schools.

I also saw loads of sea slugs and starfish, it was fun! So, then I went back up to breathe and then went back down.

Tawan (Thank you for the goggles.)

When I put my Zogg goggles on, this is what I saw and felt...

I could see the beautiful clear water, I felt amazing, I smiled every second with my Zogg goggles on. When my teacher Mr. G turned on the hose to wet us even more, everyone had there Zogg goggles on and were having a great time. The Zogg goggles were protecting our eyes from the water. I'm pretty sure everybody loves the Zogg goggles

by Hayden-Leigh

When I put on my Zogg goggles this is what I saw...

When I swam into the sparkling blue water, I saw a beautiful coral reef with loads of different species of fish.

I felt the fish swim by as I got deeper, a whole bunch of sardines swam above me it looked so cool, then some dolphins swam in and cornered the sardines and ate them.

I got hungry so I swam up and left the beach for lunch.

By Eli 😊



TE RUMA TEKAU MA RIMA

Room 15 have been using playing cards to practise their basic facts; addition, subtraction and times tables. What a fantastic idea to do at home, if you have a pack of cards.



BANK ACCOUNTS

Many families keep a small bank account with the school office to pay for stationery and sprots fees. If you would like to do this, bring in some cash and talk to Melva or Maree and they will show you how it works.

Some families have set up a regular bank credit to do the same thing. If you wish to do this, the lovely office ladies will help with this. Our account is Koraunui School Board of Trustees 12 3478-0015483-00

CONTACT DETAILS

It is important that we have accurate and up-to-date contacts for safety and emergencies. If any details have changed for you, please contact the office and let them know.

WHATS COMING UP THIS TERM?

Week Seven onwards:

- Wednesday 16 March: Te Puāwaitanga o te Kākano Parent Video Session 6.00pm
- Friday 1 April: **STAFF ONLY DAY SCHOOL CLOSED, NO KCC THIS DAY**
- Thursday 14 April: End of Term 1
- Monday 2 May: Term Two starts

BOARD OF TRUSTEES POLICY DOCUMENTATION



Koraunui School



This site contains

Koraunui School's

Policies and Procedures

along with useful checklists and forms.

As a part of this terms policy review, our Board of Trustees is seeking parent and school community input about the **Health, Safety and Welfare and Emergency, Disaster and Crisis Management sections of our policies.**

Instructions are below for how to access the review section of the Schooldocs site.

The close off date for comments and input is this Friday 18th March.

Instructions for parents to access policy review.

1. Visit the website <https://koraunui.schooldocs.co.nz/1893.htm>
2. Enter the username (koraunui) and password (koraunui).
3. Follow the link to the relevant policy as listed.
4. Read the policy.
5. Click the Policy Review button at the top right-hand corner of the page.
6. Select the reviewer type "Parent".
7. Enter your name (optional).
8. Submit your ratings and comments.
9. If you don't have internet access, school office staff can provide you with printed copies of the policy and a review form.

UNDER REVIEW

Term 1 2022

Dave Lamont
Principal

KCC HOLIDAY PROGRAMME

Once your booking is confirmed you are liable for the charges, whether your child attends the programme or not, unless notification of cancellation is received by Wednesday 13 April 2022.

Monday 18 April Closed Easter Monday	Tuesday 19 April Decorate a Mug 	Wednesday 20 April Decorate a key tag 	Thursday 21 April Rainbow yarn craft 	Friday 22 April Science experiments 
Monday 25 April Closed ANZAC Day 	Tuesday 26 April Boomerang decoration 	Wednesday 27 April String art 	Thursday 28 April Art activities with local artist 	Friday 29 April Party and games day 

Please note: As well as the listed activities there will be various arts and crafts and games offered each day, as well as cooking activities on some days.

Koraunui Kids Care Holiday Programme - Expression of Interest

Please note this is an indication only, an enrolment form will be sent on receipt of this form.

Childs Name(s): _____

Parent Name: _____ Contact Number: _____

April	7am-8am	8am-12pm	12-5pm	5-5:45pm	9-3pm	Total to pay
Tuesday 19	\$5.00	\$20.00	\$25.00	\$3.75	\$30.00	
Wednesday 20	\$5.00	\$20.00	\$25.00	\$3.75	\$30.00	
Thursday 21	\$5.00	\$20.00	\$25.00	\$3.75	\$30.00	
Friday 22	\$5.00	\$20.00	\$25.00	\$3.75	\$30.00	
Total						

April	7am-8am	8am-12pm	12-5pm	5-5:45pm	9-3pm	Total to pay
Monday 25*	\$5.00	\$20.00	\$25.00	\$3.75	\$30.00	
Tuesday 26	\$5.00	\$20.00	\$25.00	\$3.75	\$30.00	
Wednesday 27	\$5.00	\$20.00	\$25.00	\$3.75	\$30.00	
Thursday 28	\$5.00	\$20.00	\$25.00	\$3.75	\$30.00	
Friday 29	\$5.00	\$20.00	\$25.00	\$3.75	\$30.00	
Total						

***Please note as per our policies, fees will apply for any public holidays that fall on any of your child's regular days of care.**

Please fill in spaces for sessions you would like your child to attend and return this booking form to the school office by Monday 4 April.

Hutt United Hockey Club welcomes new & returning players! Come play hockey! 2022 Season registrations are now open



Kia ora,

Is your child keen to have a go at field hockey? Come along to our Junior Hockey Huihuinga (taster evenings) in March and early April.

Hutt United Hockey is a vibrant Hutt Valley based hockey club with a strong focus on whānau and fun. We run junior teams for children from Year 3 to year 8. The training sessions and games are positive and fun, increasing in competitiveness as children progress up the grades.

Hockey is a winter sport, with the season starting at the beginning of term 2 and running through to the end of term 3. Teams practice once a week and games are played on Saturday mornings.

Hockey is great for kids! Playing hockey improves coordination and balance, builds teamwork, enhances mental strength and cardio fitness. All your child needs is a stick (the club has some to spare), shinpads, sports shoes and a mouthguard. Subs are \$95 for the whole season.

All welcome to our pre-season JUNIOR HOCKEY HUIHUINGA taster evenings! Just turn up!

To manage numbers we're running *one Wednesday evening session per age group*:

- **23rd March (Year 7/8)** taster AND TRIALS at Maidstone turf, Upper Hutt, 6-7pm
- **30 March (Yr 5/6)** taster at Fraser Park turf, Avalon, 6-7.30pm
- **6th April (Year 3/4)** taster at Fraser Park turf, Avalon, 6-7.30pm.

Come along - all are welcome! These are optional fun sessions, no registration needed, just turn up. *In the "Red" traffic light setting, Wellington Hockey requires those attending with their children to have their vaccine passes and to wear masks.*

HUHC Junior registrations for the 2022 season are open! Register here:

<https://airtable.com/shrFMPwd0saimSL7w> Registrations must be in by 30 March!!

HUHC Club Day! For those who would like to know more about our club, and see our senior players in action, please join us for the Hutt United Hockey Club Day from 10.30am on Saturday 12 March at the National Hockey Stadium in Newtown. The Men's P1 game starts 11am. **Then at 12.15pm there will be a 30 minute session for tamariki to have a hit around with our top players!!** Then the Women's P1 play afterwards.

If you have any questions, check our website (www.huttunitedhockeyclub.co.nz/juniors) or contact huttunitedhockeyjuniors@gmail.com.